

DATA GUIDE

Description .

Introducing the Solium. Our new and improved solar powered belisha beacon. With over 2 years of development and testing we're now pleased to be announce we are in production. The lightest, most compact and efficient Belisha beacon on the market.

Solar Power.

30W panel - 560 x 350 x 25mm Mono crystalline
 Max-Power Voltage (VMPP): 18.7V
 Max-Power Current (IMPP): 1.61A
 Open-Circuit Voltage (VOC): 22.87V
 Short-Circuit Voltage (ISC): 1.76A
 Temperature Range: -40°C to +85°C

Solar Panel Housing.

Lightweight aluminium housing, bracket and clamps.
 Powder coated RAL 9005 gloss black
 Total height of panel is 530mm when bolted upright.
 26 degree mounting angle optimising sunlight and space.
 Secured to the post via x2 76mm 2-part cast aluminium Uni clamps to be fixed with 4 x stainless steel M8 fixings.
OPTION: for 89mm uni clamps or banded system.

Battery Power.

The best part about the Solium is its sleek compact design.
 The solar panel itself houses the battery pack meaning everything is housed at the top of the post eliminating the need for column door access.

- 10.8v 20AH, Rechargeable lithium-ion cell battery pack.
- Low temp cut off – 10 degrees (c)
- High temp cut off +60 degrees (c)
- Max charge current – 10A

Belisha Beacon.

Globe – Part no. HG300 - 300mm UV stable rotary moulded 'High Glow' globe with gasket seal.

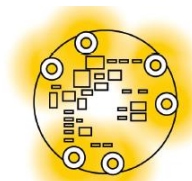
Gallery – Part no. BG3 - Single piece die cast aluminium gallery for a 76mm post top.

- Powder coated RAL 9005 gloss black
- 4 x Stainless steel m6 post fixings
- 3 x Stainless steel m6 globe fixings

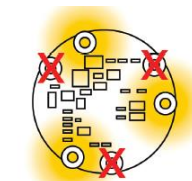
LED – Part no. LED 2PW – L6 – Flashing LED PCB

6 Watt day time flashing

-
- 3 watt night time flashing
- Integrated flash controller (40 flashes per min)
- Integrated smart solar controller



6 Watt During DAYTIME
To maximise performance.



3 Watt During NIGHT TIME
To reserve power.

General info.

- **Up to 14 day autonomy**
- **3 year warranty** – return to base.
- **Lightweight construction**
– Total weight of head kit **5.5kg**
- **Aluminium construction.**
- **Multiple post options**
- **Victron solar panel**
– 5 year manufactures warranty
- **Optional 50w solar panel upgrade**
– For areas with limited sun light

* Belisha beacons ltd reserves the right to alter or improve this document without prior notice given.

